

Kem Opperman-Torres
Director of Sustainability
Center for Sustainability





DILLARD

UNIVERSITY

**United Way of
Southeast Louisiana**



EPA Grant

Personnel

Project Director

Project Manager

Communications Specialist

Community Engagement Manager

Offsetting salaries

Grants Accountant

Sustainability Director



EPA Grant

Requirement 1 Strategy 2 - *Mobility and Transportation to Prevent Air Pollution*

Requirement 2 Strategy 2 - *Outdoor Air Quality and Community Health Improvement*

Dillard - 3 to 5 EV Charging Stations on campus

UWSELA - 3 to 5 EV Charging Stations at two Prosperity Centers

Blue Bike Stations - 30 bikes & 200-300 reduced/free memberships -
DU Campus, two to connect DU to Blue Bike Network

E-bikes - 250-300 distributed to low income families



EPA Grant

Requirement 1 Strategy 3 - *Energy-Efficient, Healthy, and Resilient Housing and Buildings*

Requirement 2 Strategy 2 - *Outdoor Air Quality and Community Health Improvement*

Improving HVAC system (replace chillers)

Increase Building Automation Systems through the whole campus

Submeter every building to monitor efficiency

Solar panels and backup battery storage - DU & UWSELA

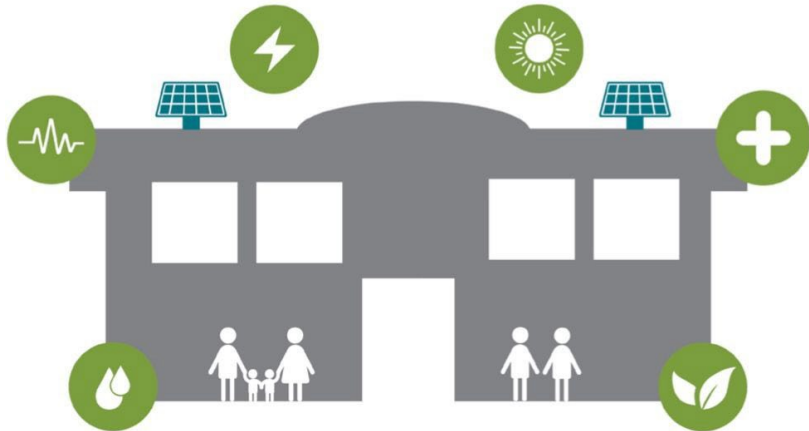


EPA Grant

Requirement 1 Strategy 5 - *Community Resilience Hub*

Dillard - Union and PSB

UWSELA - 2 Prosperity Centers



what is a *resilience hub?*

trusted community-serving facilities that support communities in everyday life and before, during, and after an emergency



EPA Grant

Requirement 1 Strategy 7 - *Waste Reduction and Management to Support a Circular Economy*

Requirement 2 Strategy 2 - *Outdoor Air Quality and Community Health Improvement*

Once weekly recycling drop-off at:

DU - Gentilly Station

City Park - Crescent City Farmers Market

Lafitte Greenway - Mid-City Farmers Market

Permanent Service

DU - Campus recycling and composting



EPA Grant

Requirement 1 Strategy 8 - *Workforce Development*





**COMMUNITY
CHANGE GRANTS**
Environmental and Climate Justice
U.S. Environmental Protection Agency

Innovative, Climate-resilient, and Cost-effective Decentralized Wastewater Treatment Systems and Management in Rural Unincorporated Communities in the Alabama Black Belt

Amal Bakchan, Ph.D.; Assistant Professor, *Texas A&M University* (**presenter, Lead Applicant**)

Sherry Bradley, MPA; Executive Director, *Black Belt Unincorporated Wastewater Program* (**Statutory Partner**)

Kevin White, Ph.D.; Emeritus Professor, *University of South Alabama*

Mark Elliott, Ph.D.; Professor, *University of Alabama* Mark Barnett, Ph.D.; Professor, *Auburn*

University Jason Ren, Ph.D.; Professor, *Princeton University*

Amy Chatham, Ph.D.; Assistant Professor, *University of Alabama at Birmingham*

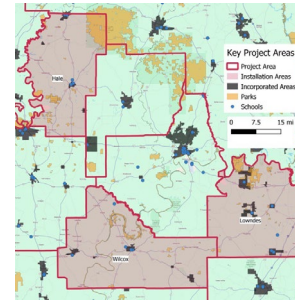
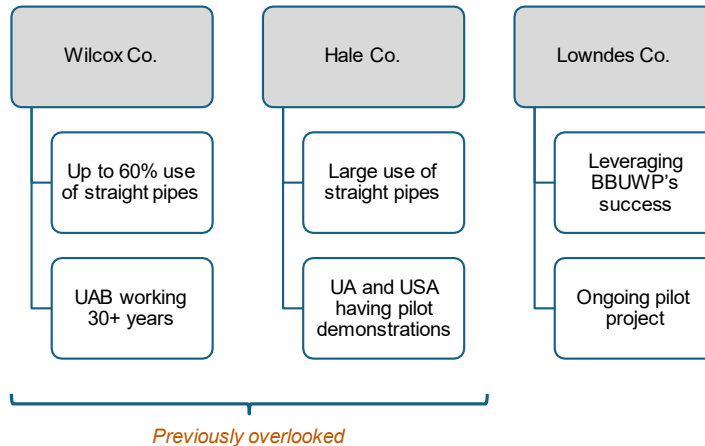
Maura Allaire, Ph.D.; Associate Professor, *University of California, Irvine*

Barry May; Executive Director of Workforce and Economic Development, *Alabama Community College System*

August 12th, 2024



The **scope** of the Project Area



Project Area Map



Alabama Black Belt Counties



Black Belt's project **activities**

- Address the greatest **needs** in the Black Belt.
- Provide a **holistic** approach to addressing wastewater issues.





Robust community engagement

- Ongoing partnerships and pilot demonstrations through **CARWW** *
- Robust **community relationships** through BBUWP, UAB AmeriCorps VISTA, and CARWW.
- BBUWP's** program in Lowndes county (e.g., pilot project, enrollment, application).



Community meeting organized by CARWW

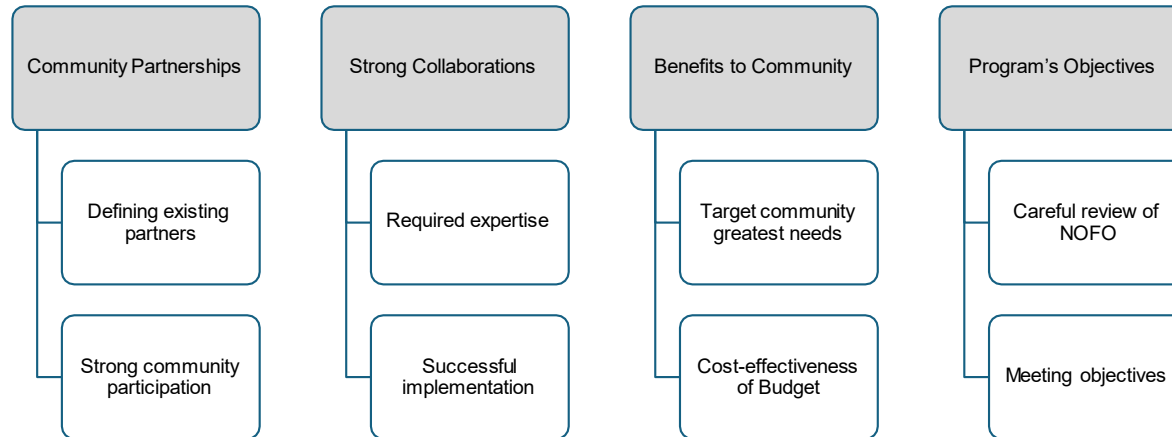


Decentralized system installed in Newbern, AL

* CARWW: Consortium for Alabama Rural Water and Wastewater Management;
ruralwastewater.southalabama.edu



Insights for strengthening the proposal application





**COMMUNITY
CHANGE GRANTS**
Environmental and Climate Justice
U.S. Environmental Protection Agency

Thank you!

For more information

Amal Bakchan, Ph.D.; bakchan@tamu.edu



Photo credit: Project team

Crafting Successful Grant Proposals

Bathsheba Philpott, CFRE

President and Principal Consultant

Fundraising Guru Consulting LLC



Proposal Development

- Establish a Timeline with Tasks and Staff Assignments
- Engage Stakeholders Early (external and internal)
- Provide Detailed Information on Approaches to the Objectives and Strategies
- Align Narrative with the Evaluation Criteria (scoring rubric and weighting)
- Use Peer Reviews to Enhance the Proposal Narrative
- Ensure all Elements of the Application are Cohesive
- Detail Budget Justifications Clearly and Align with the Narrative
- Double-Check all Data and Budget Calculations

Successful Proposals Are..



Compelling, free of jargon, and easy to read



Convey urgency and explain the need



Present a thoughtful, effective, and feasible plan



Demonstrate the organization's capacity to be successful

Proposal Submission

01

Test online submission portal early for compatibility.

02

Follow funder-provided templates.

03

Keep your application concise and well-formatted.

04

Safeguard draft applications by working offline before submitting.

Engaging an External Contractor for Proposal Development

- ▶ Secure at Least Three Months Prior to Deadline
- ▶ Ensure Relevant Experience
- ▶ Establish a Timeline and Detailed Scope of Work (roles and responsibilities)
- ▶ Provide Needed Background for Proposal Upon Contract Execution (engage SMEs and partners)
- ▶ Respond Timely and Establish Regular Check-in Points (meetings, etc.)

Thank you!
Questions and
Answers

Bathsheba Philpott, CFRE
bphilpott@fundguruconsulting.com
202-750-0835

